

Regency at The Woods

Landscaping Ideas for
Your Properties





NEW!

**What's New or...
Exciting This Year?**



How
about a
NEW
COLOR!



Color of
the Year
2022

PANTONE[®]

Very Peri
17-3938

According to
Pantone, this new
light purple
encourages
personal
inventiveness and
creativity!





How can you bring that out to
your Garden?

With Perennials





Allium 'Millenium'

Perennial: Sun

12 - 18" tall

Flowers mid June to
late August



Agastache 'Blue Fortune'

Perennial: Sun - Part Shade

24-36" tall

Flowers late June to
late September



Nepeta 'Blue Wonder'

Perennial: Sun
8-12" tall

Flowers late April to
late September



Geranium 'Rozanne'

Perennial: Sun - Part Shade

12 - 18" tall

Flowers May to October

With Shrubs





Caryopteris 'Sunshine Blue'

Shrub: Full Sun
3 - 4' tall and wide
Flowers August - September



Hibiscus Azurri Blue Satin

Shrub: Full Sun
8 - 12' tall and 4 - 6' wide
Flowers June - September



Buddleia Pugster Blue

Shrub: Full Sun

18 - 24" tall and wide

Flowers July - October

With Groundcovers





Phlox subulata 'Emerald Blue'

Groundcover: Full Sun
3 - 6" tall and 8" - 12" wide
Flowers Early, April - May

With Annuals





Browallia ‘Endless Illumination’

Annual: Part Shade - Shade
12-16” tall and 10” - 14” wide
Flowers May - Frost



Salvia 'Victoria Blue'

Annual: Full Sun

18-24" tall and 12"- 15" wide

Flowers June - October



Calibrachoa- Trailing ‘Purple Lace’

Annual: Full Sun – Part Shade
6-12” tall and 12”- 24” wide
Flowers All season



Angelonia 'Serena Purple'

Annual: Full Sun – Part Shade
12” tall and 12” wide
Flowers May to October

With Spring Bulbs

Planted in the Fall





Allium
'Purple Sensation'
Giant Flowering Onion

Perennial: Sun – Part Shade
20 - 30" tall
9 bulbs per sf
Flowers May to June



Hyacinth Various Varieties

Heavy Clay Soils in the Landscape

Problems that can occur with Heavy Clay Soils

- Compaction
- Poor Drainage
- Fungus
- Weeds
- Poor Nutrient availability
- Shallow root systems



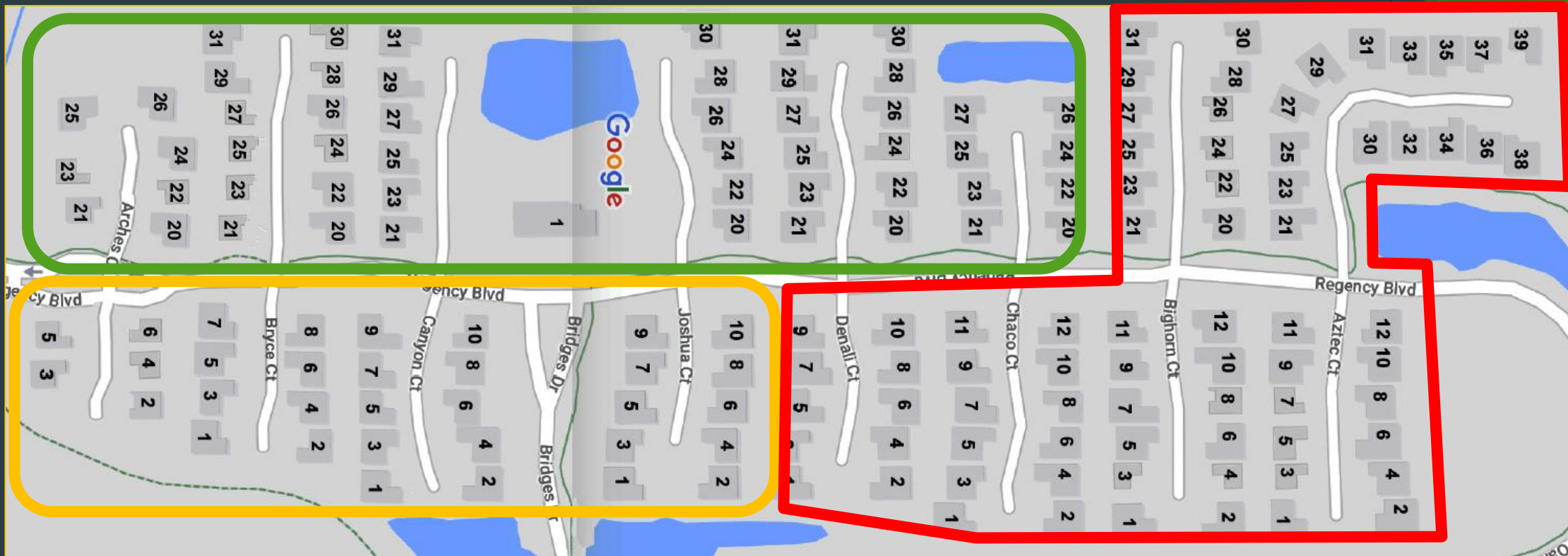
Possible Solutions to help with the Soil structure

- Amend the soil before planting
- Apply Humic Acid to your turf
- Aeration
- Recycle Leaves and lawn clippings back into the turf to Increase organic matter

How can you help protect your landscape?

Set Irrigation to reduce turf saturation on the day of mowing.

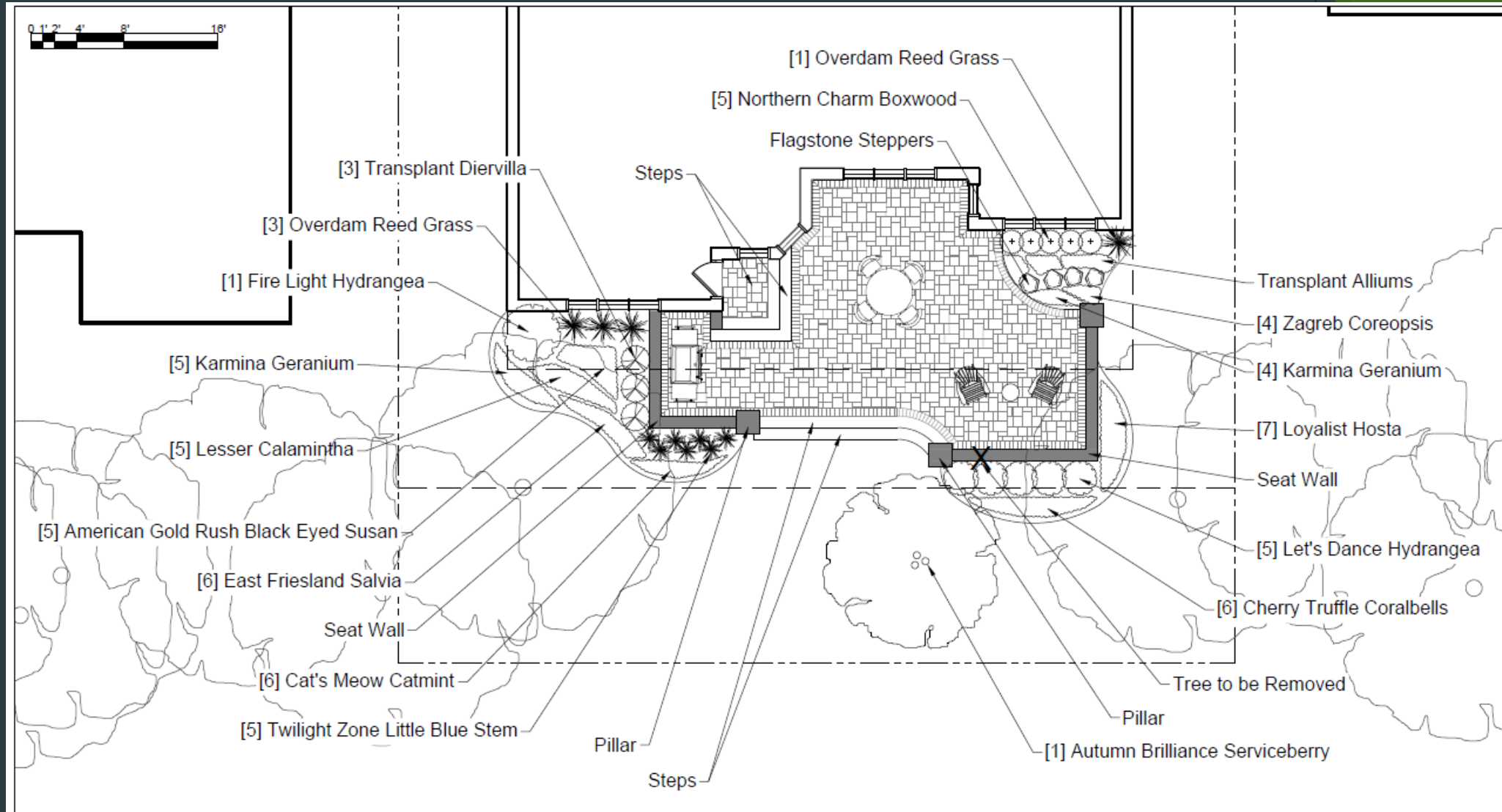
Coordinate with your neighbors to ensure that your irrigation systems do not overlap



Green = Wednesday Service **Red** = Thursday Service **Orange** = Friday Service

**Approximate Mowing Schedule- May Alter due to weather, site conditions or at the discretion of Sebert Landscape

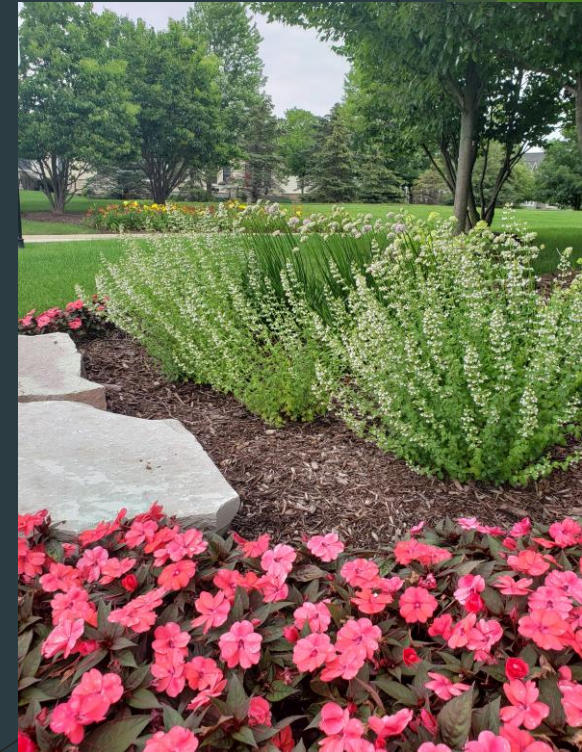
Other SEBERT Services



Full Landscape Design Services-

Other SEBERT Services

- Mulching
- Flowers for Planters or Beds
- Over Seeding
- Slit Seeding
- Turf Aeration
- Soil Amendments



Other SEBERT Services

- Patios
- Drain Tile
- Plants, Trees, Shrubs
- Decorative Stone
- Removals



Thank you for your time and opportunity
to showcase Sebert Landscape.

We are looking forward to working with
You this season!